

NEW! **THA-serie TOKU Hammers** WITH SCREW CAP CHISEL RETAINERS

THA-2BRH17
THA-3BRH17
THA-4BRH17



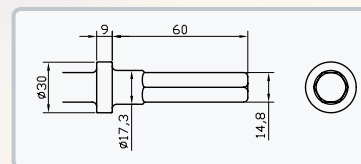
THA-serie TOKU Hammers

After successful introduction of the screw cap chisel retainers on TOKU's AA-series of hammers, we decided that the THH series of hammers will also be replaced by a version with screw cap chisel retainer. This screw cap also has a side entry, so you can use wide chisels as well. The new series of hammers have the type number THA. And just like its predecessor there are 3 different versions with different energy levels.

Important to know: The new hammers use chisels and points with a round collar, not an oval collar. Please check the table with available chisels and part numbers. The THA series is available from stock as from today.

TOKU THA series air hammers are used in construction industry, metal processing industry, foundries and other applications. THA hammers are characterized by the very powerful blows.

Shank size 14,8 mm HEX / Ø17.3 mm x 60 mm



Ordernumber	Description	L (mm) under the collar	B (mm)
CB3210260	Moil point	260	-
CB3210450	Moil point	450	-
CB418	Round nose	210	-
CB420	Diamond point	155	-
CB3211260	Flat chisel	260	20
CB3211330	Flat chisel	330	20
CB424	Flat chisel	155	50
CB426	Flat chisel	155	38
CB3218200	Wide flat chisel	200	50
CB3218200G	Wide flat chisel, bent	200	60
CB3217210	Wide flat chisel	210	95
CB3217210G	Wide flat chisel, bent	210	95

Type	Brand	Shank size mm	Bore diameter mm	Stroke mm	Blows p/min	J/Blow	Air cons. l/s	Weight kg	Inlet thread	Hose diameter mm	Vibration m/s ²	Noise level dB(A)
THA-2BRH17	TOKU	○ 14,8 x ○ 17,3 x 60	28,5	51	2.300	15,7	14,2	6,8	PT 3/8"	13	11,6	101
THA-3BRH17	TOKU	○ 14,8 x ○ 17,3 x 60	28,5	64	2.200	19,9	15	7,2	PT 3/8"	13	14,4	104
THA-4BRH17	TOKU	○ 14,8 x ○ 17,3 x 60	28,5	102	1.800	31,8	15,8	7,8	PT 3/8"	13	9,1	103